



Beaufort County Public Works Stormwater Infrastructure Project Summary

Project Summary: Wimbee Landing Road

Activity: Routine/Preventive Maintenance

Narrative Description of Project:

Completion: May-13

Project improved 1,358 L.F. of drainage system. Constructed 1,358 L.F. of channel. Installed (1) driveway pipe and rip rap for erosion control.

2013-633 / Wimbee Landing Road	Labor Hours	Labor Cost	Equipment Cost	Material Cost	Contractor Cost	Indirect Labor	Total Cost
AUDIT / Audit Project	1.0	\$20.89	\$0.00	\$0.00	\$0.00	\$13.23	\$34.12
BKFILL / Back Fill	5.0	\$104.45	\$64.28	\$27.84	\$0.00	\$66.15	\$262.71
HAUL / Hauling	52.5	\$1,123.13	\$561.75	\$494.59	\$0.00	\$727.30	\$2,906.76
ONJV / Onsite Job Visit	10.0	\$308.58	\$53.56	\$34.91	\$0.00	\$245.22	\$642.27
PRRECON / Project Reconnaissance	8.0	\$321.84	\$32.16	\$12.40	\$0.00	\$271.68	\$638.08
RDREC / Roadside ditch - reconstructed	60.0	\$1,333.80	\$592.60	\$311.08	\$0.00	\$642.40	\$2,879.88
RSDCL / Roadside Ditch - Cleanout	30.0	\$666.90	\$316.00	\$349.70	\$0.00	\$321.20	\$1,653.80
UTLOC / Utility locates	1.0	\$20.89	\$0.00	\$0.00	\$0.00	\$13.23	\$34.12
2013-633 / Wimbee Landing Road Sub Total	167.5	\$3,900.48	\$1,620.35	\$1,230.51	\$0.00	\$2,300.41	\$9,051.75
Grand Total	167.5	\$3,900.48	\$1,620.35	\$1,230.51	\$0.00	\$2,300.41	\$9,051.75

After



After



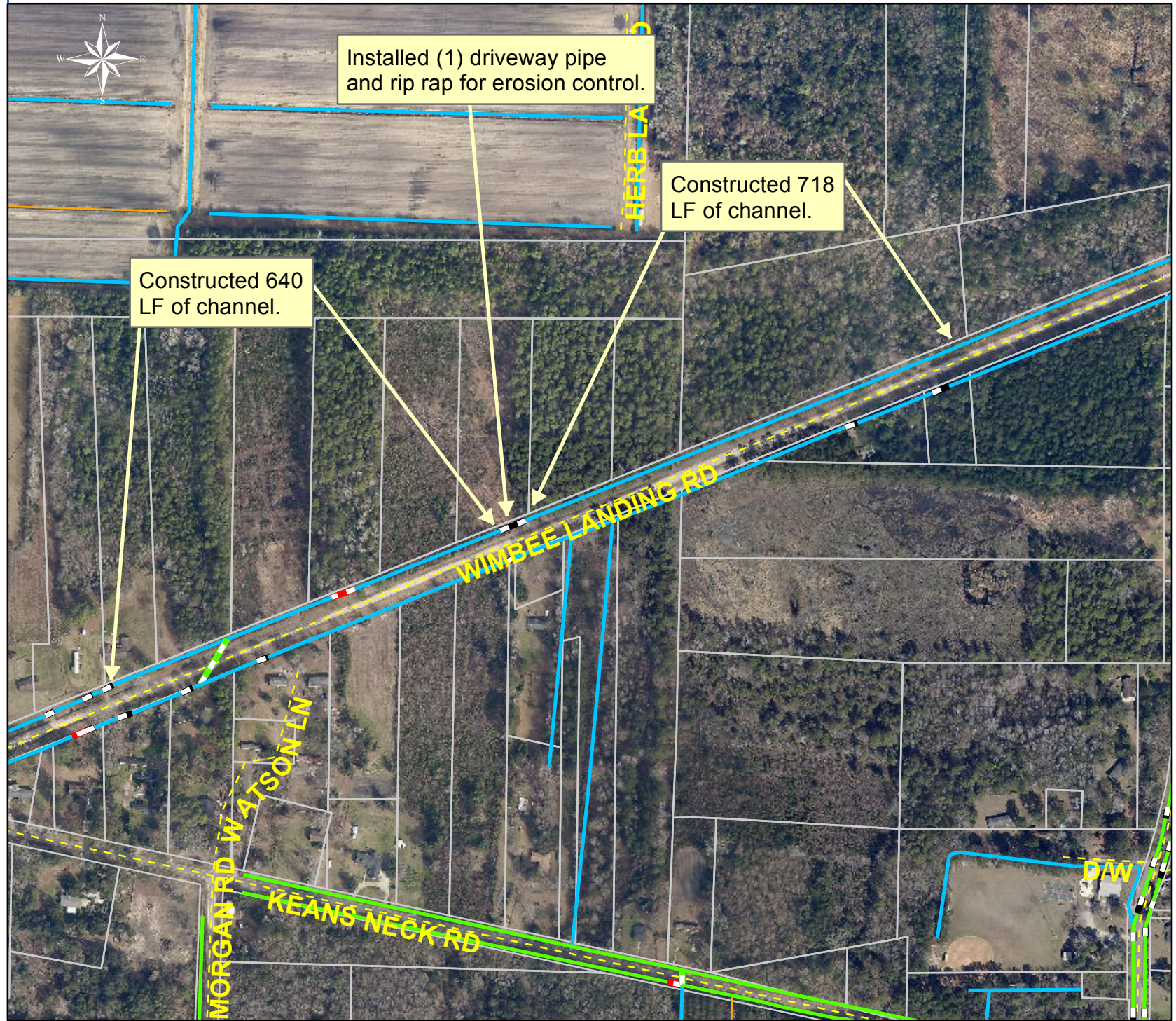
Project: Wimbee Landing Road

Activity: Routine/ Preventive Maintenance

Project #: 2013-633

Township: Sheldon

Completed: May 2013



Legend

TYPE

- River
- Creek/Stream
- River/Creek/Marsh BANK
- Channel (fka Outfall)
- Channel Pipe
- Lateral
- Lateral Pipe
- Roadside
- Roadside Pipe
- Road Pipe
- Crossline Pipe
- Driveway Pipe
- Access Pipe
- Bleeder Pipe



1 inch = 389 feet